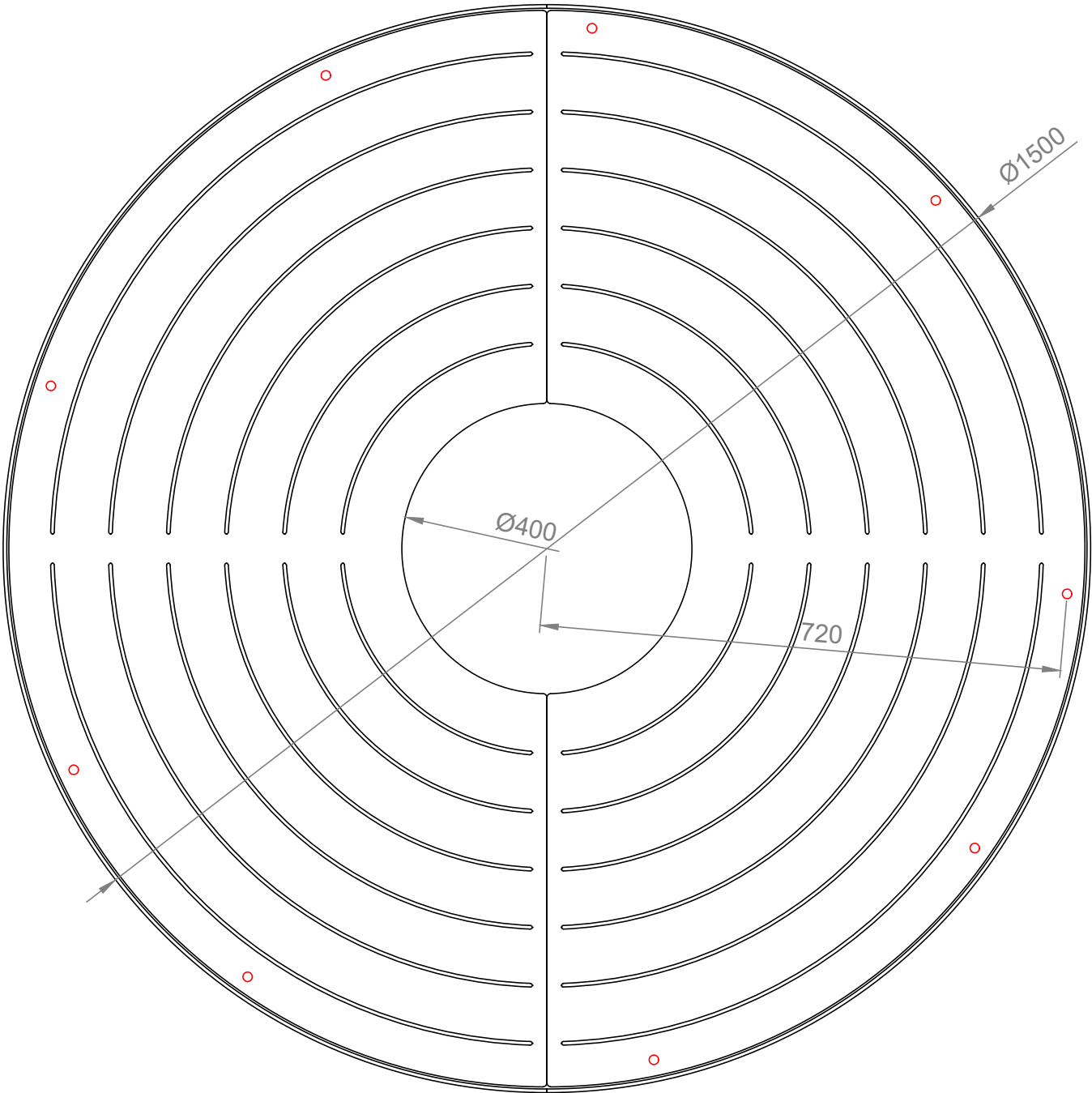


304 and 316 Stainless steel (Satin polished) also available

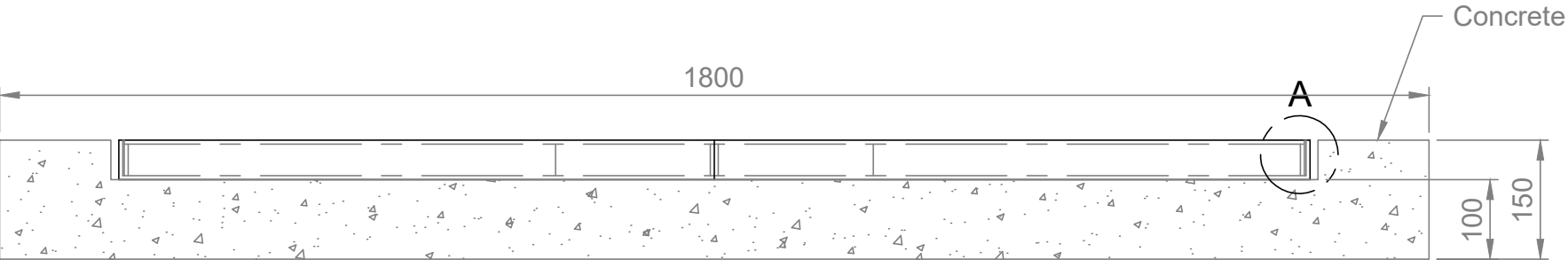
**INSTALLATION DETAILS (Recommendations only)**

*Concrete slab, 25mPa:*

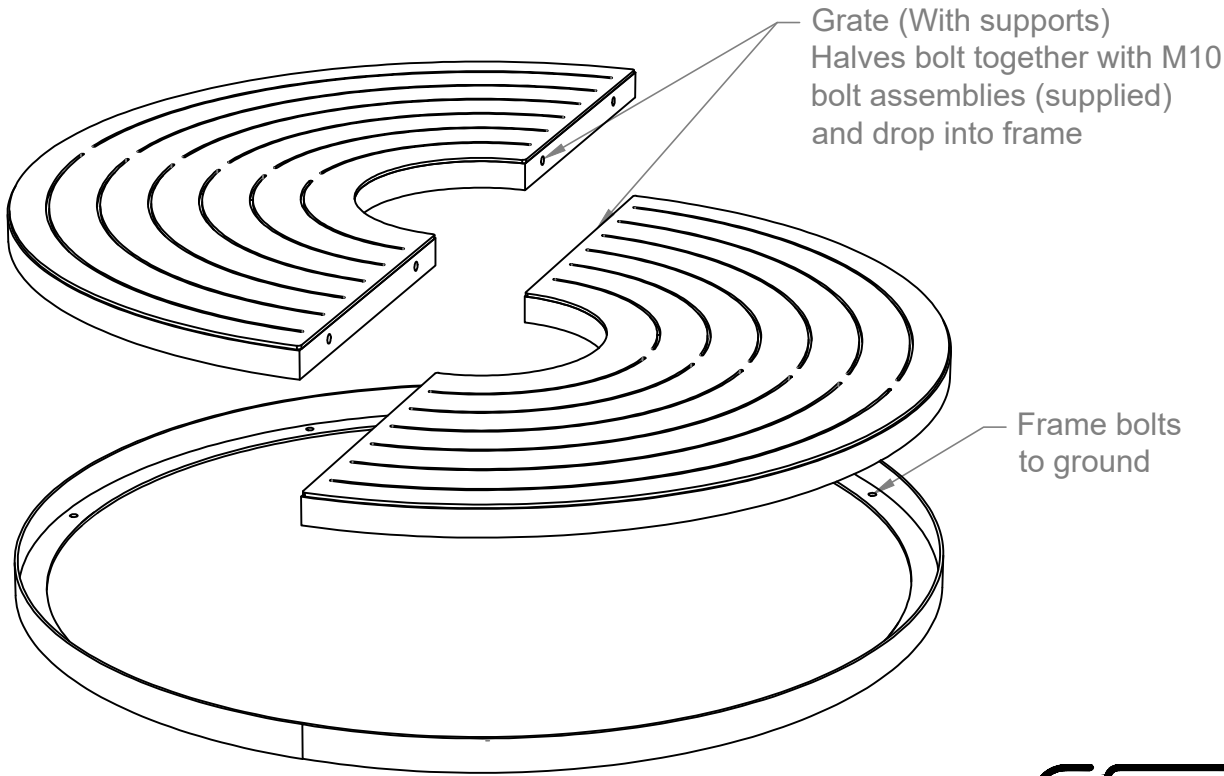
- One aprox. 1800x1800x100mm (minimum) thick slab recommended
- Bolt down to footings with 9x M12x75mm Dynabolts or similar



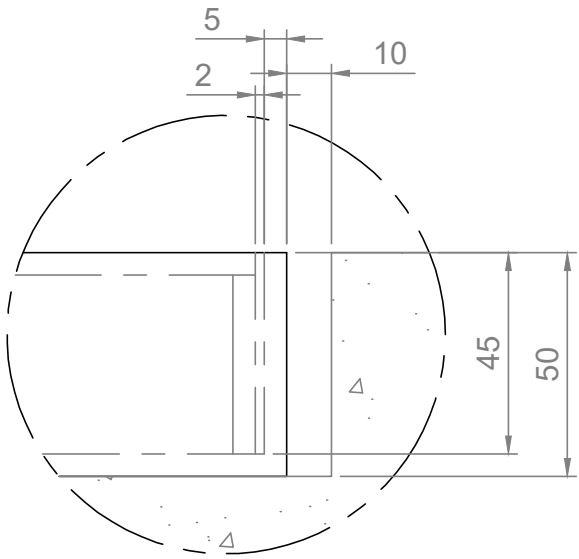
Top view



Front view



Perspective view  
(Exploded)



Detail View A  
(Not to scale)



Commercial Systems Australia Pty. Ltd.

42 Orchard St, Kilsyth South, VIC  
phone: (03) 9723 4111  
fax: (03) 9723 3494  
email: design@commercialsystems.com.au

Model Code: TG1090  
Model Description: Circular Tree Grate

**Drawing: CS2992**

Sheet Number: -  
Sheet Description: Installation  
**Ø1500mm**

Drawn By: K.Sohanpal  
Date Drawn: 29.09.2016  
Revision number: 2  
SCALE 1:1

ALL DIMENSIONS IN MILLIMETERS  
UNLESS OTHERWISE STATED  
ALL PARTS CENTRED UNLESS SPECIFIED

TOLERANCES	
X	+/- 1mm
X.X	+/- 0.5mm
X.XX	+/- 0.05mm